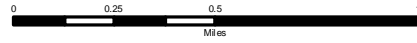


City Parks & Trails

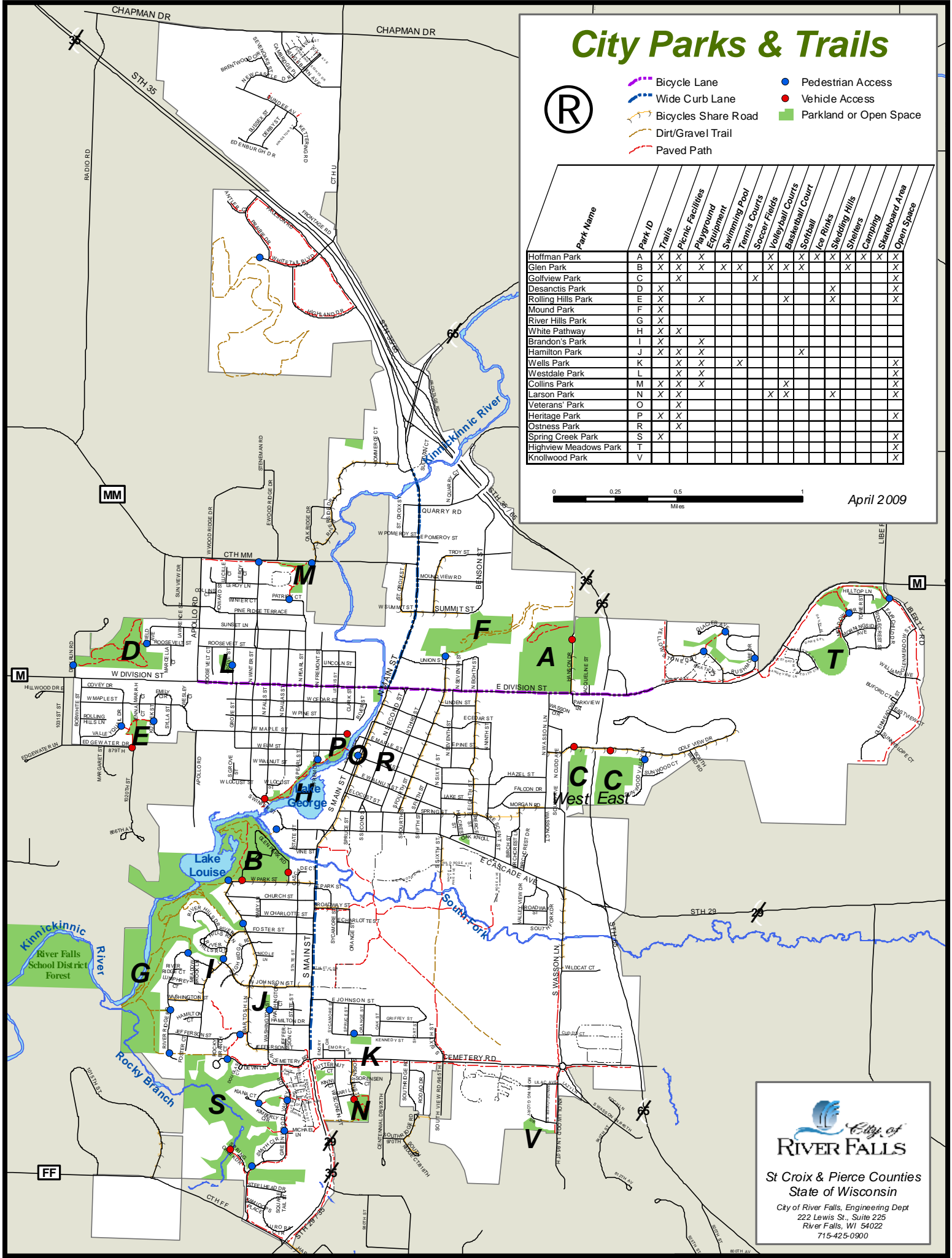


- Bicycle Lane
- Wide Curb Lane
- Bicycles Share Road
- Dirt/Gravel Trail
- Paved Path
- Pedestrian Access
- Vehicle Access
- Parkland or Open Space

Park Name	Park ID	Trails	Picnic Facilities	Playground Equipment	Swimming Pool	Tennis Courts	Soccer Fields	Volleyball Courts	Basketball Courts	Softball	Ice Rinks	Sledding Hills	Shelters	Camping	Skateboard Area	Open Space
Hoffman Park	A	X	X	X												
Glen Park	B	X	X	X	X	X	X	X	X	X	X	X	X	X	X	X
Golfview Park	C	X	X			X										X
Desantis Park	D	X														X
Rolling Hills Park	E	X		X				X				X				X
Mound Park	F	X														X
River Hills Park	G	X														X
White Pathway	H	X	X													X
Brandon's Park	I	X		X												X
Hamilton Park	J	X	X	X						X						X
Wells Park	K	X	X	X	X											X
Westdale Park	L	X	X	X												X
Collins Park	M	X	X	X				X	X							X
Larson Park	N	X	X					X	X			X				X
Veterans' Park	O	X	X													X
Heritage Park	P	X	X													X
Ostness Park	R	X	X													X
Spring Creek Park	S	X	X													X
Highview Meadows Park	T															X
Knollwood Park	V															X



April 2009



City of RIVER FALLS
 St Croix & Pierce Counties
 State of Wisconsin
 City of River Falls, Engineering Dept
 222 Lewis St., Suite 225
 River Falls, WI 54022
 715-425-0900